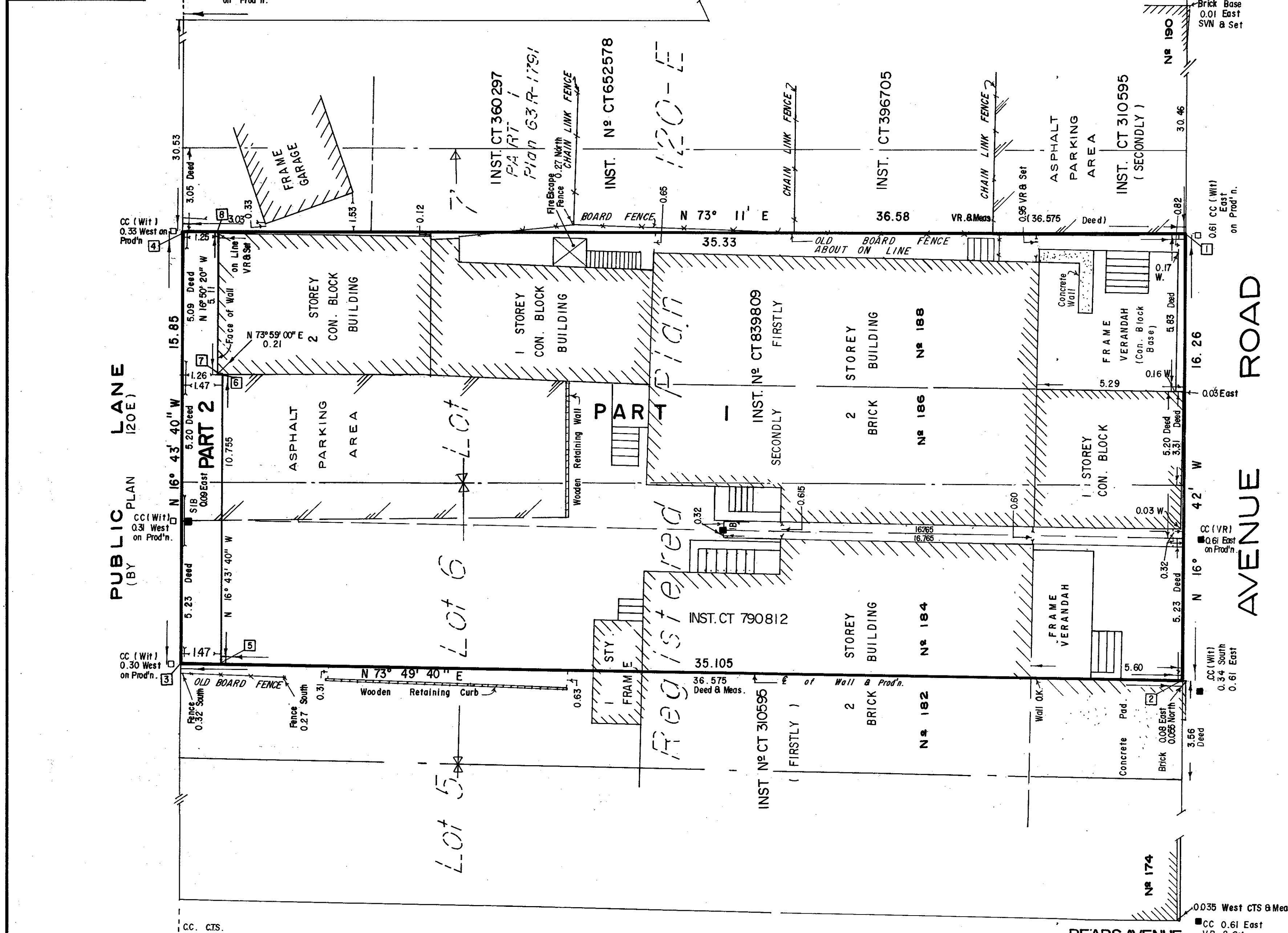


PLAN MATERIAL
 PLASTIC MATERIAL - MYLAR
 GAUGE - 0.076 mm
 INK - BLACK MAGIC
 PHOTOGRAPHIC PROCESS

CC CTS 5.00 North on Prod'n.



METRIC
 DISTANCES SHOWN ON THIS PLAN ARE IN METRES AND CAN BE CONVERTED TO FEET BY DIVIDING BY 0.3048

I REQUIRE THIS PLAN TO BE DEPOSITED UNDER THE REGISTRY ACT.

DATE: AUGUST 17, 1987.

W. Dennis Fisher
 W. DENNIS FISHER - O.L.S.

PLAN 63R-3974
 RECEIVED AND DEPOSITED

DATE: August 26, 1987

Ass't. Chas. Casey
 ASS'T. CHAS. CASEY
 DEPUTY LAND REGISTRAR FOR THE REGISTRY DIVISION OF TORONTO (No 63)

CAUTION: THIS PLAN IS NOT A PLAN OF SUBDIVISION WITHIN THE MEANING OF THE PLANNING ACT.

SCHEDULE

PART	LOT	PLAN	INST. No	AREA
1	6, 7	120-E	CT 790 812 & CT 839 809	565.0 m ²
2	6, 7	120-E	CT 790 812 & CT 839 809	22.2 m ²

PLAN OF SURVEY OF
PARTS OF LOTS 6 AND 7
REGISTERED PLAN 120-E
CITY OF TORONTO
 MUNICIPALITY OF METROPOLITAN TORONTO
 SCALE 1:100
 McCONNELL, MAUGHAN LTD. O.L.S.
 1987.

NOTE
 BEARINGS SHOWN HEREON ARE ASTRONOMIC AND ARE REFERRED TO THE WESTERLY LIMIT OF AVENUE ROAD, ASSUMED TO HAVE A BEARING OF N 16° 42' W IN ACCORDANCE WITH REFERENCE PLAN 63R-334.

- IB DENOTES IRON BAR
- SIB " STANDARD IRON BAR
- CC " CUT CROSS
- WIT " WITNESS MONUMENT
- VR " V. RALEND O.L.S.
- SVN " SPEIGHT, VAN NOSTRAND LTD. O.L.S.
- SET " SET MONUMENT
- FOUND " FOUND MONUMENT
- CTS " CITY OF TORONTO SURVEYS

SURVEYOR'S CERTIFICATE
 I CERTIFY THAT,
 1 THIS PLAN AND SURVEY ARE CORRECT AND IN ACCORDANCE WITH THE SURVEYS ACT, THE REGISTRY ACT AND THE REGULATIONS MADE THEREUNDER,
 2 THE SURVEY WAS COMPLETED ON THE 14th DAY OF AUGUST, 1987.

DATE AUGUST 17, 1987

W. Dennis Fisher
 W. DENNIS FISHER
 Ontario Land Surveyor

CO-ORDINATES

POINT No	EASTING	NORTHING
1	313 069 . 60	4837120.94
2	074 . 28	105.36
3	039 . 15	095.18
4	034 . 59	110.36
5	040 . 56	095.59
6	037 . 47	105.88
7	037 . 27	105.83
8	035 . 79	110.72

McCONNELL, MAUGHAN LIMITED
 ONTARIO CONSULTING LAND ENGINEERS SURVEYORS
 1 ATLANTIC AVENUE, TORONTO M6K 3E7 536-7020

TORONTO OAKVILLE
 DRAFTED BY M. R. CHECKED BY J. A. S.
 PROJECT No 3623 PLAN No 4399-A